

# PORTAL SPY 2.0

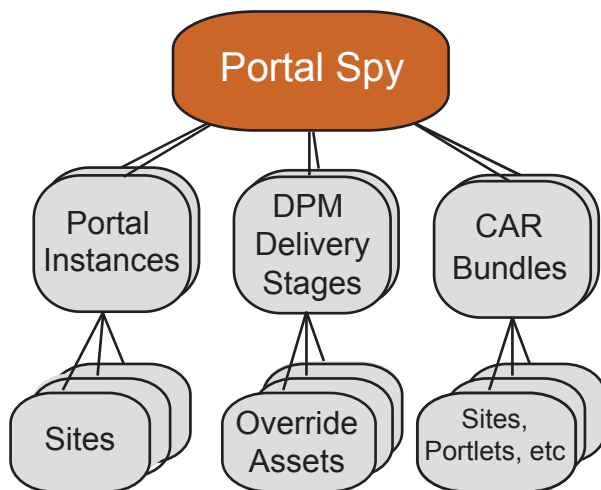
## Product Datasheet



### **Realize the Full Value of your Open Text / Vignette Investment**

Portal Spy will transform your Open Text Vignette Portal and Dynamic Portal Module network into a more powerful, flexible, productive, transparent, and enjoyable platform for hosting your company's web initiatives.

Sutro Software launched the first official release of Portal Spy in October 2008 at Vignette Village, then followed up a year later with Portal Spy 2.0 at Open Text Content World 2009. The result of years of iteration with Vignette's largest customers, in use at Global 500 IT departments around the world, singled out by CMS Watch's *2009 Enterprise Portals Report* as "very handy for large Vignette Portal deployments," Portal Spy is an essential tool for any Vignette developer or administrator.



### **Manage**

Portal Spy operates above the level of the Vignette Portal Server Console, providing one-console control over your entire portal and content delivery stage topology. Federate all of your portal instances, Dynamic Portal Module (DPM) override assets, and component archive (CAR) bundles into a single management console, then drag portal components from one to the other as if working with files on a filesystem.

Quickly browse and search through all of your portal assets no matter where they are hosted – richly visualizing any and all portal-related images, code, and configuration. You can even compare and graphically synchronize entire portal environments with one another.

### **Develop**

Portal Spy includes a powerful portal-aware Integrated Development Environment (IDE). Any change to user interface layer source files – JSP, XSL, HTML, Javascript, CSS, etc. -- can be made inline with Portal Spy's syntax-highlighted source editor. Changes are saved back to your portal instances via Vignette's deployment API, so your clusters remain correctly synchronized. Changes to DPM assets update the appropriate web application. Changes to CAR file contents are rebundled into their parent archives. Synchronize code changes with your source control system by simply dragging changed files back into your local working copy – Portal Spy's desktop filesystem integration makes it easy. Graphically compare source changes across any portal instance or CAR file, then merge differences from one to the other with a click of the mouse.

### **Deploy**

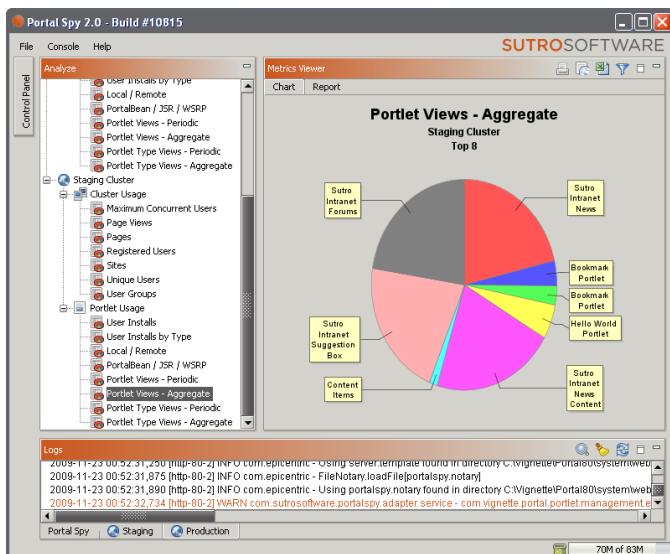
After using Portal Spy's drag-and-drop deployment features once, you will never go back to the tedious, error-prone, ad-hoc alternative. Move your sites from staging to production by simply dragging them from portal to portal. Transfer incremental changes rather than whole sites for safer, more granular updates – navigation items, portlets, grids, styles, even individual source files and images are all available for both drag-and-drop transfer and high-level comparison and synchronization. This increased ability to interconnect your Vignette Portal instances, content delivery stages, component archives, and desktop filesystem opens up new possibilities, making it easier to experiment and iterate, allowing you to consider projects that were previously freighted with too many manual steps and restrictive processes. Portal Spy's powerful deployment features will save you time, money, and frustration.

## Analyze

Portal Spy taps into Vignette Portal's native metrics API\*, which by default collects valuable portal usage metrics that often lie dormant within your portal's database, unexposed through any user interface. Portal Spy exposes this data in rich, interactive charts, graphs, and spreadsheets that are easily exported to your favorite graphics and spreadsheet applications. Unlike alternative analytics solutions, Portal Spy's analysis and reporting tool:

- Never sends your usage data outside of your firewall to any third party.
- Requires no integration work, such as changes to your HTML or UI code.
- Surfaces usage history collected long before you start using Portal Spy – dating back to the first time you installed your Vignette Portal instance.
- Provides portal-aware, portlet-centric metrics. While other analytics solutions are designed to measure generic web page views, Portal Spy provides portlet type and portlet instance usage data unavailable from any other analytics provider.

*\*Note that if you have disabled your Vignette Portal metrics subsystem due to performance concerns, Portal Spy will help you re-enable it in a way that has no performance impact whatsoever. See the Portal Spy user guide for details.*



## Configure

You will marvel at the simplicity of Portal Spy's centralized configuration management. All configuration files and settings across your portal and content delivery stage network can be viewed and modified in Portal Spy's syntax-highlighted property editor. Portal configuration files, PortalBean definition files, web and JSR portlet application XML and TLD files, DPM configuration, even database-hosted Portal 8.0 configuration settings are all available for graphical editing and cross-instance comparison. You can synchronize configuration settings between different nodes of the same portal cluster, or across entire clusters -- Portal Spy's high-level graphical comparison and merge utility makes it easy.

## Monitor

Portal Spy monitors all of your portal instance log output from a central, searchable, color-coded log viewer. Exceptions jump out in bright red, giving you a graphical way of quickly scroll-scanning for problems. Each portal instance you connect to gets a new tab in the log console, allowing you to browse through the log output of your entire portal network as easily as surfing the web.

## Integrate

As a rich client desktop application, Portal Spy integrates seamlessly with your overall software environment. Portal Spy interoperates with your browser and with the Vignette Portal user interface, linking you directly into whichever specific parts of the Server Console or Site Console you need to complete your tasks. Portal Spy integrates with your filesystem, allowing you to drag-and-drop portal components, source files, and configuration files to and from your desktop and local source control directories. Portal Spy analytics exports your usage report data to your favorite reporting tools. Portal Spy even allows you to manage your application server restarts via scriptable restart controls that work with whatever restart management system you already have in place. Portal Spy fits into your company's authentication system by integrating with industry-leading single sign-on products. Java desktop technology ensures that Portal Spy behaves the same way on Mac, Linux, Windows, or Solaris. Portal Spy's use of Java Web Start gives you the option of automatically keeping the product up-to-date with the latest fixes and updates. Finally, Portal Spy's help menu integrates with Sutro Software's issue tracking system, allowing you to report issues and make product suggestions at the click of a button.

## Unify

Tie together the loose ends of your Vignette Portal and Dynamic Portal Module instances and assets. Regain control of your portal website change management process. Answer questions about your company's portal and portlet usage. Centralize the configuration, development, management, and monitoring of all your Vignette Portal installations.

Unify your Vignette Portal network with Portal Spy.

## Try the Best

Portal Spy and Vignette Portal are a powerful combination. Together they provide capabilities not available from any other enterprise portal platform. Together Portal Spy and Vignette Portal represent the world's best enterprise portal technology.

Try Portal Spy today at <http://sutrosoftware.com>



Portal Spy  
+  
Open Text Vignette Portal  
=  
The World's Best Enterprise  
Portal Platform

## Feature Summary

### New in Portal Spy 2.0:

- High-level portal-to-portal comparison and synchronization.
- Portal component dependency analysis.
- Dynamic Portal Module support.
- Open Text Vignette Portal 8.0 support.
- Portal component transfer enhancements:
  - *Multi-select* drag-and-drop deployment.
  - Navigation block transfer.
  - Right-click transfer.
  - Drag-and-drop portal upgrades.
- Portal Spy resource definition import / export.
- Connectivity enhancements:
  - Custom SSL certificates.
  - Additional single sign-on and NTLM support.
  - Realm support.

### Portal Spy includes:

- One-console control over multiple portal installations.
- Drag-and-drop portal component transfer and deployment.
- Detailed portal usage analytics via stylish, interactive graphs and charts.
- Syntax-highlighted code viewing, editing, diffing, and merging with transparent deployment.
- Graphical portal and portlet configuration editing, diffing, and merging.
- Scriptable application server restart capability.
- Consolidated, color-coded portal log viewing.
- CAR (component archive) file visualization, deployment, and reconciliation.
- Rich, responsive, cross-platform desktop user interface.
- One-click installation with optional auto-update support.
- Support for Vignette Portal versions **7.1 through 8.0**, on all platforms and configurations. Drag-and-drop portal upgrade support for any upgrade path between these major versions.
- Passionate customer support.
- Aggressive roadmap committed to enhancing and extending the capabilities of Open Text's Vignette product line.

## **Sutro Software**

Sutro Software started life in 2005 as a consulting company specializing in Vignette Portal related software development. At Vignette Village 2008 Sutro publicly launched the first production version of its flagship software product, Portal Spy. Portal Spy 2.0 debuted a year later at Open Text Content World 2009.

Sutro founder John Petersen helped create one of the industry's first enterprise portal products at Epicentric. After Epicentric's acquisition by Vignette, he managed Vignette's portal engineering division before leaving to start Sutro. With a decade of enterprise portal experience across multiple companies, roles, and projects, he is one of the industry's foremost experts.

Sutro Software is an official Open Text partner.

Sutro Software  
261 Carl Street, Suite #A  
San Francisco, CA 94117  
415-738-4334 (ph)  
415-738-4335 (fx)  
@sutrosoftware (tw)  
info@sutrosoftware.com  
www.sutrosoftware.com



**SUTROSOFTWARE**